

Lycée polyvalent

Georges POMPIDOU

Castelnau-le-Lez

351 av du maréchal de Lattre de Tassigny 34170 CASTELNAU-LE-LEZ
Agglomération de Montpellier
Région Languedoc-Roussillon

Table of contents

I - Lycée Georges POMPIDOU :

- Geographic location
- General information
- Architecture and history
- Staff organization
- Degrees
- Term dates

II - European projects and international activities

III - General description of diplomas

IV - E C T S

V - Studies assessment

VI - Courses available

VII - BTS « Assistant Secrétaire Trilingue » courses

VIII - BTS « Comptabilité et Gestion des Organisations » courses

IV - BTS « Management des Unités Commerciales » courses

X - Practical information :

- Formalities
- Insurance
- Application and registration
- Transport and communications
- Cost of living
- Housing
- Student activities

I - Lycée Georges POMPIDOU

I-1 LOCATION AND HISTORICAL INFORMATION



Lycée Georges POMPIDOU is located in CASTELNAU LE LEZ, south of France, in a region called Languedoc Roussillon.

This town was created 2500 years ago on a Roman path called Via Domitia. It was named after Roman emperor Domitius.

Its first name was Sextentio (30 BC). It was then changed to Castellum Novum after the building of a castle located in a place where St John's church lies today.

The name of the town was given in the 17th century as Castelnaud le Lez It means "new castle on the river Lez"

Due to the close proximity of Montpellier the town has developed from a population of 10,000 inhabitants to 15,000 today.

I - Lycée Georges POMPIDOU

I-2 GENERAL INFORMATION

Director Christian DASI

International affairs coordinator

Béatrice BARCELO, Chef de travaux

Code ERASMUS : MONTPEL45

Address

351, avenue du maréchal de Lattre de Tassigny



34170 CASTELNAU-LE-LEZ

Location

3 kilometres from Montpellier city (direct by tramway)

Tél : 0033 (0)4 67 02 99 10

Fax : 0033 (0)4 67 02 99 32

e-mail : ce.0341921D@ac-montpellier.fr

Type of school

Comprehensive secondary school and Advanced studies

Courses in academic and vocational subjects

School status

Led by a School Board of administrators (its members are elected. Its representatives include staff and students)

Student application and registration

Students are selected based on their school results.

One of the requirements is Baccalaureat (A-levels).

They can apply online (March and April).

When selected the students can register online as well.

School rules specify the rights and obligations of the students

I - Lycée Georges POMPIDOU

I-3 ARCHITECTURE AND HISTORY



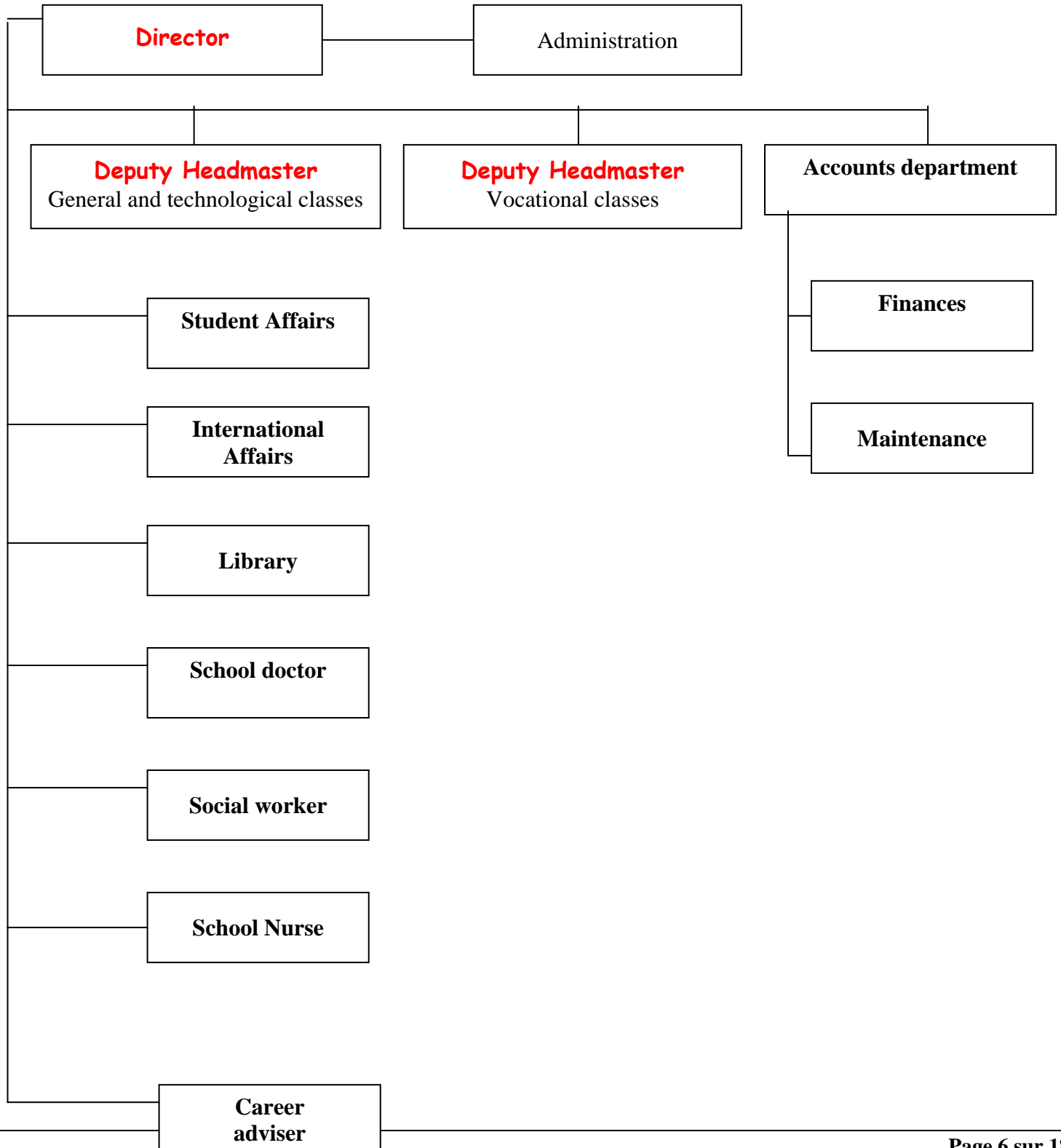
The Lycée, which opened in 1996, looks like the ancient Mediterranean circular villages from the Middle Ages.

It was built in a Mediterranean style : the Roman tiles , cypresses, aromatic plants (lavender, rosemary,) and laurels in the garden add to the pleasure of taking a walk in the paths.



I – Lycée Georges POMPIDOU

I-4 ORGANIZATION



I - Lycée Georges POMPIDOU,

I-5 DEGREES

Higher Education:

BTS Assistant de Manager
BTS Comptabilité et Gestion des Organisations
BTS Management des Unités Commerciales

Comprehensive secondary education :

General studies:

Baccalauréat (A-Levels) : literature / Economics / Sciences

Technological studies :

Baccalauréat (A-Levels) : Communication, Human resources management, Marketing, Accounting

Vocational Studies :

Secretarial skills, Accounting, Sales

I - Lycée Georges POMPIDOU

I-6 TERM DATES 2009 - 2010

First day of term	September 3, 2009
Fall break	October 23 (after classes) to November 4, 2009 included
Christmas break	December 18 (after classes) to January 3, 2010 included
Winter break	February 12 (after classes) to February 28, 2010 included
Spring break	April 9 (after classes) to April 25, 2010 included
National exams	May 17 to June 25, 2010



II - EUROPEAN PROJECTS AND INTERNATIONAL ACTIVITIES: Erasmus, Comenius, Leonardo Da Vinci

Lycée Georges Pompidou signed the Erasmus charter number 215-801 in September 2009.
ERASMUS: Code : MONTPEL45.

Lycée Georges Pompidou is developing a policy of internationalisation and a network of international contacts.

Lycée Georges Pompidou is involved in bilateral EU financed student and teacher exchange programmes with Germany, Italy, Spain, Great Britain, Finland,

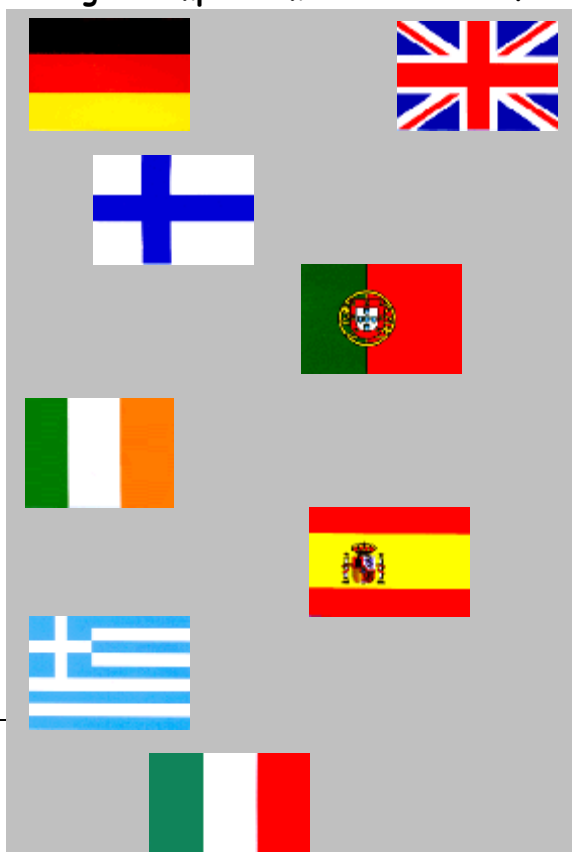
According to this charter, Lycée G. Pompidou welcomes students from European Universities which have agreed on these bilateral exchanges and this allows our BTS students to study in these foreign countries.

- Requirement : reserved to 2nd year BTS students, during the first term..
- Minimum stay in a foreign university : 3 months / Maximum stay : 1 year.
- An Erasmus mobility grant is given to the students who apply for it with the National Agency of their country. The expenses and helps vary from one country to another.

This grant, given by the European agency of the home country of the student can be divided and conditioned to the production of Erasmus documents and certificates. Therefore, the students who are interested in this project must anticipate their stay and have financial autonomy to fulfil their mobility project.

Each training period is validated through ECTS (European Credit Transfer System). An assessment record and a certificate are given to the student.

Applications form to Lycée Georges Pompidou must be sent before October 15.



III- GENERAL DESCRIPTION OF DIPLOMAS:

QUALIFICATIONS :

3 Higher education degrees (3 BTS courses = Diploma : Brevet de Technicien Supérieur)

- **BTS « ASSISTANT DE MANAGER » :**

The qualification obtained after the 2 year course and a good knowledge of French and two foreign languages allow the graduate to work as a P.A. in marketing, production, or communications departments of firms which are in contact with foreign countries.

- **BTS « COMPTABILITÉ ET GESTION DES ORGANISATIONS » :**

This degree enables the graduate to work in the management, accounting or financial departments of firms or in accounting offices.

- **BTS « MANAGEMENT DES UNITÉS COMMERCIALES » :**

This diploma allows graduates to work in commercial units. Their assignments and missions include management, customer services, stock managements, technological watch...

IV - ECTS :

European Credit Transfer System

In order to make it easier for students to spend a period of study abroad, the European Commission has developed the **European Credit Transfer System (ECTS)**, which allows their achievements to be assessed and compared, and the results communicated from the host university to the home university

What is ECTS?

The European Credit Transfer System is a student-centred system based on the student workload required to achieve the objectives of a programme, objectives preferably specified in terms of the learning outcomes and competences to be acquired.

Assessment

Every class is assigned a number of ECTS

What is a credit system?

TS credits based on the student's effort it involves. These credits reflect this effort as a proportion of the average total effort involved in a full academic year at the university concerned. Included in the notion of effort are lectures, project work, seminars and self-study, as well as examinations or other assessment procedures. Credits thus express a relative value.

Credits for a particular class are awarded when the corresponding examination is passed, or the other requirements for successful completion are fulfilled.

A credit system is a systematic way of describing programmes by attaching credits to its components. The definition of credits in higher education systems may be based on different criteria, such as student workload, learning outcomes and contact hours.

How did ECTS develop?

ECTS was introduced in 1989, within the framework of Erasmus, now part of the Socrates programme. ECTS is the only credit system which has been successfully tested across Europe. ECTS was initially set up for credit transfer. The system facilitated the recognition of periods of study abroad and thus enhanced the quality and volume of student mobility in Europe. Recently ECTS has been developing into an accumulation system to be implemented at institutional, regional, national and European level. This is one of the key objectives of the Bologna Declaration of June 1999.

What are the key features of ECTS?

ECTS is based on the principle that 60 credits measure the workload of a full-time student during one academic year. The student workload of a full-time study programme in Europe amounts in most cases to around 1500-1800 hours per year and in those cases one credit stands for around 25 to 30 working hours.

- Credits in ECTS can only be obtained after successful completion of the work required and appropriate assessment of the learning outcomes achieved. Learning outcomes are sets of competences, expressing what the student will know, understand or be able to do after completion of a process of learning, long or short.
- Student workload in ECTS consists of the time required to complete all planned learning activities such as attending lectures, seminars, independent and private study, preparation of projects, examinations, and so forth.
- Credits are allocated to all educational components of a study programme (such as modules, courses, placements, dissertation work, etc.) and reflect the quantity of work each component requires to achieve its specific objectives or learning outcomes in relation to the total quantity of work necessary to complete a full year of study successfully.

The performance of the student is documented by a local/national grade.

It is good practice to add an ECTS grade, in particular in case of credit transfer. The ECTS grading scale ranks the students on a statistical basis. Therefore, statistical data on student performance is a prerequisite in applying the ECTS grading system. Grades are assigned among students with a pass grade as follows:

- A 10% : skills are perfectly acquired
- B 25%skills acquired
- C 30% skills partially acquired
- D 25% some skills not acquired
- E 10% many essential skills not acquired

A distinction is made between the grades FX and F that are used for unsuccessful students. FX means: "fail- some more work required to pass" and F means: "fail - considerable further work required". The inclusion of failure rates in the Transcript of Records is optional.

What are the key documents of ECTS?

Three European documents are necessary to guarantee the openness of the agreements between the different schools:

- The regular Information Package/Course Catalogue of the institution to be published on the Web and/or in hard copy in one or more booklets. The Information Package/Course Catalogue must contain the items of the [checklist](#) including information for host students from abroad.
- The Learning Agreement contains the list of courses to be taken with the ECTS credits which will be awarded for each course. This list must be agreed by the student and the responsible academic body of the institution concerned. In the case of credit transfer, the Learning Agreement has to be agreed by the student and the two institutions concerned before the student's departure and updated immediately when changes occur.
- The Transcript of Records traces the performance of a student by showing the list of courses taken, the ECTS credits gained, local or national credits, if any, local grades and possibly ECTS grades awarded. In the case of credit transfer, the Transcript of Records has to be issued by the home institution for outgoing students before departure and by the host institution for incoming students at the end of their period of study.

V- Studies - Assessments

Studies : educational program

The Ministry of Education determines the educational programs

At the end of the second year, a national exam is organised for all BTS students.

Two years study in first university level is compulsory to acquire the skills allowing a BTS qualification.

This qualification enables the students that have got the ECTS A or B grades to complete their second year studies or to get a job.

The lectures, practical tests and training periods in the firms take place during 2 semesters and start on September 1st.

Assessment

The work of the students is regularly assessed. The tests enable the teachers to grade the semesters' results which open the way to second year learning.

The minimum ECTS grade required is level C.

The students shall demonstrate that they have attained the knowledge and skills set as a goal for the subject area and its constituent courses by participating in the prescribed examinations.

Examinations take the following form:

- Tests: written tests, oral tests, group tests, home tests, exposés.
- Practical work and exercises, written reports on practical training.
- Written and oral performance: essays, oral presentations to a group.

VI - PRACTICAL INFORMATION FOR INCOMING STUDENTS

Formalities:

Before coming to France there are certain preparations the students should undertake before leaving their home country:

- European citizens need an official valid identity card to prove their identity
- Citizens from countries outside Europe who intend to stay in France for more than three months must obtain a residence permit through the French embassy or consulate of their home country before arrival in France.

For more information about student visas and residence permits, see

www.vosdroits.service-public.fr

Insurance:

Personal insurance:

All students coming to France should have a personal insurance covering possible damages caused by negligence or loss of belongings etc.

Healthcare insurance:

All students from EU/EEA countries must bring a valid E111 certificate, obtainable in their own home countries, which entitles them to medical care under the French National Health Scheme. Expenses related to dental care and illnesses contracted before arrival in France are not covered. Exchange students from other parts of the world apply for voluntary enrolment in the French national Health Scheme after arrival. It is the student's own responsibility to make insurance arrangements for any accident, illness, injury, loss or damage to persons or property resulting from, or in any way connected with, the study period in France.

Application to Lycée Georges Pompidou:

Application form :

On his/her arrival, at the beginning of September, the exchange student must contact the "Students Affairs" office to fill in the application form and proceed to his/her administrative registration.

Documents required :

3 identity photographs

Valid vaccination certificates

E111 certificate delivered by the social security office of his/her home country.

Erasmus "studying agreement".

Students are requested to send exact time of arrival to the Lycée International Office so that they can be met and shown the way to their accommodation.

Transport and communications:

International Airport « Montpellier Méditerranée »

Espace Fréjorgues phone number : 0033 (0)4 67 20 85 00

www.montpellier.aeroport.fr



If you land at Montpellier airport (Montpellier Méditerranée), you need to take a bus or a taxi to Montpellier downtown.

Long-distance Coaches

EUROLINES regular international links from 28 countries

Tél : 0033 (0)4 67 58 57 59

www.eurolines.fr



PUBLIC TRANSPORTS SERVICES

Railways Links national links (TGV) SNCF Station

Place Auguste Gilbert

Tél 0033 (0)4 67 74 15 12

www.sncf.com

Discounts can be obtained if you buy your ticket one month before departure.

Local Buses

Montpellier area :

Buses or Tramway

TAM OFFICE :

6, rue Jules Ferry 34000 MONTPELLIER

Tél : 0033 (0)4 67 22 87 87

Fax : 0033 (0)4 67 22 87 97

Opening Hours : 7 h – 19 h from Monday to Saturday

Web: <http://www.montpellier-agglo.com> Click on « Guide pratique »



One ticket only to bus and tramway

How to buy a ticket or a student transport card for one month:

The students can buy a discount on a student season ticket, for unlimited travels, when they live in Montpellier or its suburbs.

Application to transport company offices (TAM) produce the documents required :

Identity photography, the student card delivered by Lycée Pompidou, an I.D.

Price of the card : 4€

Fare : 190 €/year or 19€/month

**Direct link from Montpellier (Downtown -Corum) to Lycée Georges POMPIDOU
With the tramway -every 6 minutes, from Monday to Saturday (6:25 A.M to 9 P.M)**

Regional buses :

Departures in front of « CORUM » or railway station « gare SNCF » for all the cities of the region and the beaches.

Cost of living:

From 350 euros to 500 Euros a month for furnished accommodation including electricity and heating. As a general guideline, exchange students normally spend 500-800 euros a month for food, books, leisure activities and local travel.

Accommodation:

Lycée Georges Pompidou does not provide a housing service for students, however private student-housing foundations are listed below

The rent is approximately 500 euros a month

The Lycée international bureau will help exchange students to look for accommodation in guest families if informed at least three months in advance.

We would appreciate if you could inform us of the dates of your arrival and departure as quickly as possible.

Public housing : « résidence universitaire » (university campus)

CROUS Service for private rooms

Tél : 0033 (0)4 67 41 50 33

Fax : 0033 (0)4 67 41 50 50

CROUS Service for international students (for one year)

Campus « Cité Universitaire Boutonnet »

Single room : 122,40 €a month and150 €deposit with credit card (2005)

Tél : 0033 (0)4 67 41 50 38 -

Fax : 0033 (0)4 67 41 50 29

e-mail : international@crous-montpellier.fr

opening hours 9 a.m to 12 a.m. (on appointment) and 1p.m to 4 p.m (without appointment).

Youth centre

Rue des écoles laïques

34000 Montpellier

www.aubergesdejeunesse.com

montpellier@fuaij.org

Tél 0033 (0)4 67 60 32 22

Fax : 0033 (0)4 67 60 32 30

23 €/day including breakfast and dinner

Student hostels : one-room or two-room flats

Les Citadines

195 rue du Pré Aux Clercs

34090 Montpellier

Les Citadines

Antigone

588 bd Antigone

34000 Montpellier

Tél : 0033 (0)825 010 352

Tél : 0033 (0)825 010 353

Les Résidentiales

70 av du Pont Juvenal

34000 Montpellier

Tél : 0033 (0)4 67 22 74 74

Fax : 0033 (0)4 67 22 74 75



Flats Residences:

Private foundations (charges on services, administration fees)

LA RÉSIDENCE DU LEZ 34170 Castelnau-le-Lez	One-room flats with 1 double bed or 2 single beds 500 €a month Deposit : 1000 €	M. MARAVIGNA Mob 0033 (0)6 20 63 04 74 Tél 0033 (0)4 67 02 85 88 Fax 0033 (0)4 67 02 95 33
RÉSIDENCE LE CLÉMENCEAU 1 rue Bourrely 34000 Montpellier	Two-room flats shared flats 400 €/month each	Tél 0033 (0)4 67 92 93 94 Fax 0033 (0)4 67 92 93 84
SUN CITY Quartier Antigone 34000 Montpellier	One-room flats 26 m2 with Terrace 550 €/mois + 120 €	Tél 0033 (0)4 67 61 91 40
ARC EN CIEL Route de Toulouse 34000 Montpellier	Two bedded One-room flats 530 €/month	Tél 0033 (0)4 67 61 91 40
LES LAUREADES 220 rue du Pioch Boutonnet 34090 Montpellier	Single or double one-room flats,17, 27m2 402 - 505 €(2005) Included Breakfast Mail : www.laureades.com	Tél 0 825 332 332 Me Carole DETRIEUX Tél 0033 (0)4 67 72 66 18

Association Accueil en France
214 rue Louis Lépine
34000 Montpellier

Host families

ae.france@wanadoo.fr

Tél 0033 (0)4 67 64 96 65
Fax 0033 (0)4 67 64 17 00

Association VBI « Séjour chez l'habitant »
34000 Montpellier

Tél 0033 (0)4 67 86 15 50

vbi@wanadoo.fr

www.hebergement-famille.com

Fax 0033 (0)4 67 86 64 88

Library facilities

A big library has been built up in Montpellier centre, and there is one in Lycée POMPIDOU

Student activities:

Useful links to visit historical towns

Tourism information centre of Montpellier : www.ot-montpellier.fr

Possible reductions for :

- cinema, theatre, concerts, events, sports
- guided tours to historical center every Wednesday,

Saturday and Monday at 3 p.m:

Student price: 5,5 € regular price: 8 €

- Special tours : Student price : 7 € regular price : 8 €

To books : 0033 (0)4 67 60 60 60



Nîmes Tourism Information Centre

www.ot-nimes.fr



Sète Tourism Information Centre

www.ot-sete.fr



Narbonne Tourism Information Centre

www.tourisme.fr/office-de-tourisme/narbonne.htm

Perpignan Tourism Information Centre

www.perpignantourisme.com



Carcassonne Tourism Information Centre

www.tourisme.fr/office-de-tourisme/carcassonne.htm



Arles Tourism Information Centre

www.tourisme.ville-arles.fr

Avignon Tourism Information centre

www.ot-avignon.fr